

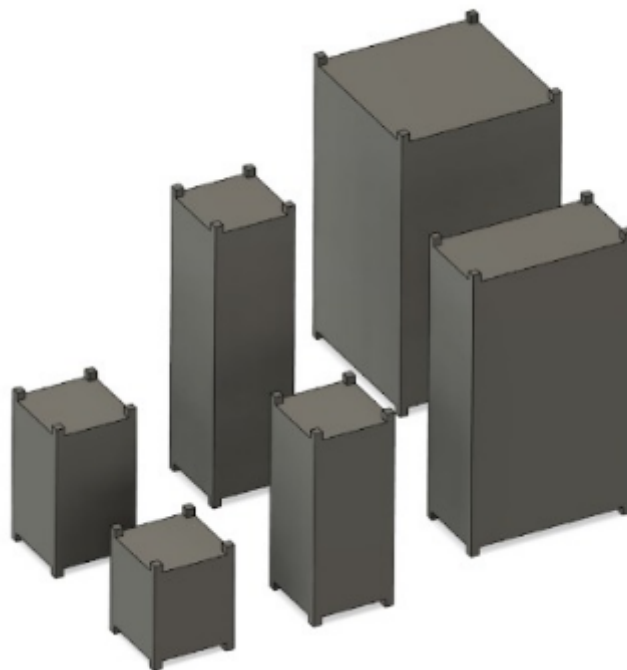
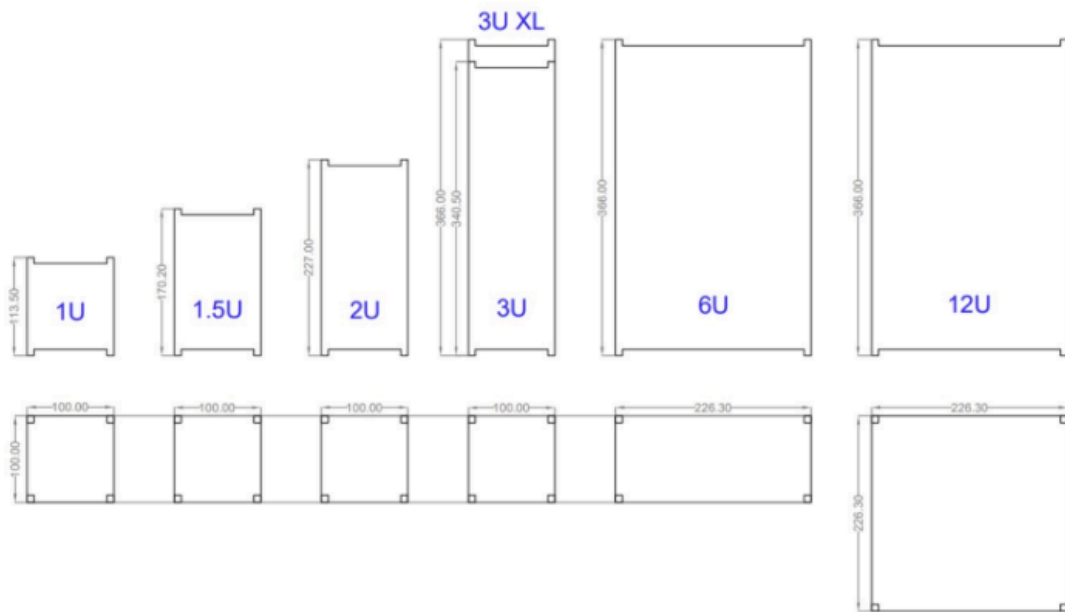
# CUBESAT STRUCTURES

1U, 1.5U, 2U, 3U, 6U, 12U.



## CubeSat Structures List



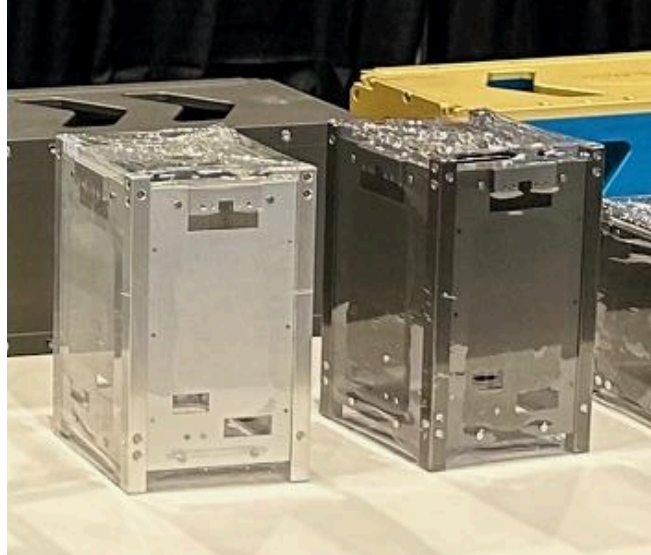


## 1U CubeSat Structure



Parameter	Typical value	Remarks
Environmental characteristics		
Temperature	-50°C to +120 °C	
Physical properties		
Dimensions	Length 100 × Width 100 × Height 113.5mm	
Max. PC104 PCB size	95.9 x 95.9 mm	4 x PC104 Mounting holes provided.
Average Weight	118 g	
Material	Aluminium T6 alloy 6061	
	Surface treatment: anodized	

## 1.5U CubeSat Structure



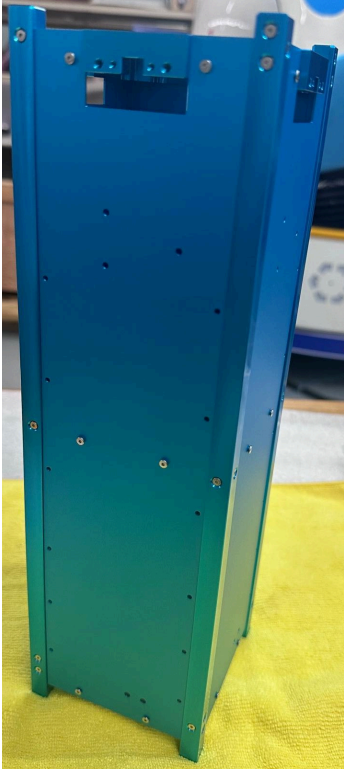
Parameter	Typical value	Remarks
Environmental characteristics		
Temperature	-50°C to +120 °C	
Physical properties		
Dimensions	L 100 × W 100 × H 170.2mm	Includes slide rails
Max. PC104 PCB size	95.9 x 95.9 mm	4 x PC104 Mounting holes provided.
Deployable dimensions	L 104 × W 104 × H 170.2mm	
Average Weight	142 g	
Material	Aluminium T6 alloy 6061	
	Surface treatment: anodized	

## 2U CubeSat Structure



Parameter	Typical value	Remarks
Environmental characteristics		
Temperature	-50°C to +120 °C	
Physical properties		
Dimensions	L 100 × W 100 × H 227mm	Includes slide rails
Max. PC104 PCB size	95.9 x 95.9 mm	4 x PC104 Mounting holes provided.
Deployable Dimensions	L 104 × W 104 × H 227mm	
Weight	Approximately 415g	
Material	Aluminium T6 alloy 6061	
	Surface processing: anodized	

## 3U CubeSat Structure



Parameter	Typical value	Remarks
Environmental characteristics		
Temperature	-50°C to +120 °C	
Physical properties		
Dimensions	L 100 × W 100 × H 340mm	Includes slide rails
Max. PC104 PCB size	95.9 x 95.9 mm	4 x PC104 Mounting holes provided.
Deployable dimensions	L 104 × W 104 × H 340mm	
Weight	Approximately 580g	
Material	Aluminium T6 alloy 6061	
	Surface treatment: anodized	

## 6U CubeSat Structure

Parameter	Typical value	Remarks
Environmental characteristics		
Temperature	-50°C to +120 °C	
Physical properties		
Dimensions	Length 100 × Width 226.3 × Height 366mm	Includes slide rails
Deployable dimensions	Length 104 × Width 230.3 × Height 366mm	Optional
Average Weight	916 g	
Material	Aluminium T6 alloy 6061	
	Surface treatment: anodized	

\*Other remarks: Options with PC104 Mounting holes or custom mounting hole options.



## 12U CubeSat Structure

Parameter	Typical value	Remarks
Environmental characteristics		
Temperature	-50°C to +120 °C	
Physical properties		
Dimensions	Length 226.3 × Width 226.3 × Height 366mm	Includes slide rails
Deployable dimensions	Length 230.3 × Width 230.3 × Height 366mm	Optional
Average Weight	1.84 kg	
Material	Aluminium T6 alloy 6061	
	Surface treatment: anodized	

\*Other remarks: Options with PC104 Mounting holes or custom mounting hole options.