

# **MyPOD**

## **Deployer & Test Fixture for Cubesats**

Product List

## MyPOD: Deployer & Test Fixture for Cubesats



MyPOD series products are versatile tools designed for the qualification, acceptance testing, and dimensional fit-check, storage and transportation of CubeSats. It supports several launch service providers and CubeSat teams by facilitating ground testing, including vibration, impact, and thermal vacuum tests. Additionally, MyPOD ensures secure storage and transportation of CubeSats throughout the preparation process.

Separately, Gran Systems designs similar deployers for launching cubesats on orbits.

Customers can choose from a range of models depending on the mission requirement.

- I. 3U MyPOD1
- II. 3U MyPOD2
- III. 6U MyPOD2
- IV. 12U MyPOD2
- V. Vibration Table Adapter Plates for all of the above are also available.

## I. 3U MyPOD1

The 3U MyPOD1 is a versatile tool designed for the qualification, acceptance testing, dimensional fit-check, and storage and transportation of CubeSats. Making it suitable for various testing and storage needs. It supports various configurations of 1U, 1.5U, 2U, 3U CubeSats. Due to its built, it is the test pod that can carry the heaviest cubesats in the industry, and will have exceptional launch vibration performance.



### **Suitable CubeSat Configurations**

The 3U MyPOD1 can be equipped with several of our CubeSat configurations:

- 2U + 1U CubeSat
- 2U + 1U Dummy CubeSat
- 1.5U + 1.5U CubeSat
- 1.5U + 1.5U Dummy CubeSat
- 1U + 1U + 1U CubeSat
- 1U + 1U + 1U Dummy CubeSat

Vibration Table Adapter Plates is also available.

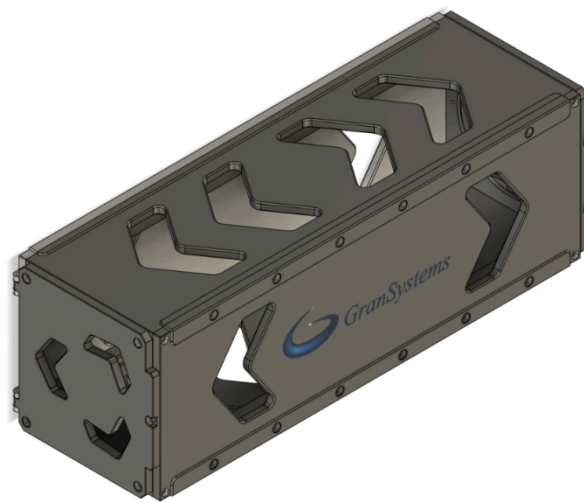
## Product Specifications

Scope	Typical Value	Remarks
<b>Environmental Characteristics</b>		
Temperature Range	-50°C to +100°C	
<b>Dimensions</b>		
External Size (L x W x H)	470 x 144 x 148.1 mm	
Rail Size (L x W x H)	100.8 x 100.8 mm	
CubeSat Size (L x W x H)	100 x 100 x 340.5 mm	
<b>Physical Characteristics</b>		
Empty Mass	7.9 kg	
Payload Mass <small>maximum</small>	6 kg	7.2 kg - class CubeSat in space
Material	Al 6061 T6	
Surface Treatment	Anodized	
Mounting Interface	6x M5 (H); 4x M5 (V)	

---

## II. 3U MyPOD2

The 3U MyPOD2 is a versatile tool designed for the qualification, acceptance testing, dimensional fit-check, and storage and transportation of CubeSats. Making it suitable for various testing and storage needs. It supports various configurations of 1U, 1.5U, 2U, 3U CubeSats.



### **Suitable CubeSat Configurations**

The 3U MyPOD2 can be equipped with several of our CubeSat configurations:

- 2U + 1U CubeSat
- 2U + 1U Dummy CubeSat
- 1.5U + 1.5U CubeSat
- 1.5U + 1.5U Dummy CubeSat
- 1U + 1U + 1U CubeSat
- 1U + 1U + 1U Dummy CubeSat

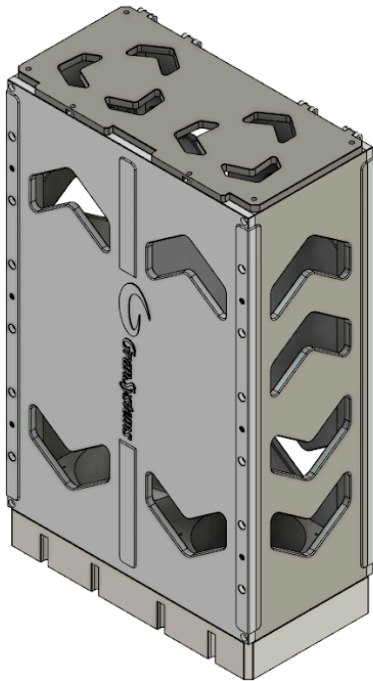
Vibration Table Adapter Plates is also available.

## Product Specifications

Scope	Typical Value	Remarks
<b>Environmental Characteristics</b>		
Temperature Range	-50°C to +100°C	
<b>Dimensions</b>		
External Size (L x W x H)	137 x 137 x 415 mm	
Rail Size (L x W x H)	100.8 x 100.8 mm	
CubeSat Size (L x W x H)	100 x 100 x 340.5 mm	
<b>Physical Characteristics</b>		
Empty Mass	4.8 kg	
Payload Mass <small>maximum</small>	6 kg	
Material	Al 6061 T6	
Surface Treatment	Anodized	
Mounting Interface	6x M5 (H); 4x M5 (V)	

### III. 6U MyPOD2

The 6U MyPOD2 is a versatile tool for CubeSat qualification, acceptance testing, dimensional fit-check, storage and transportation. It supports various configurations, including 1x6U, 2x3U, 4x1.5U, and mixed arrangements of 1U, 1.5U, 2U, and 3U CubeSats.



#### Suitable CubeSat Configurations

The 6U MyPOD2 can be equipped with several of our CubeSat configurations:

- 2x 2U + 2x 1U CubeSats.
- 4x 1.5U CubeSats.
- 2x 3U CubeSats.
- 6U CubeSat.

Vibration Table Adapter Plates is also available.

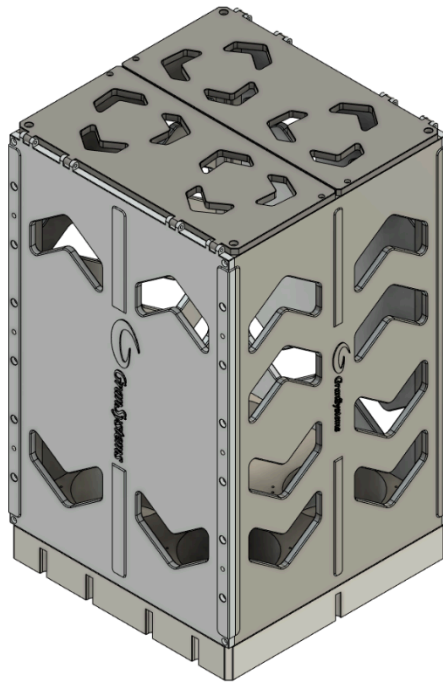
## Product Specifications

Scope	Typical Value	Remarks
<b>Environmental Characteristics</b>		
Temperature Range	-50°C to +100°C	
<b>Dimensions</b>		
External Size (L x W x H)	268 x 141 x 442.1 mm	
Rail Size (L x W x H)	100.8 x 227.0 mm	
CubeSat Size (L x W x H)	100.0 x 226.3 x 366.0 mm	
<b>Physical Characteristics</b>		
Empty Mass	8.5 kg	
Payload Mass <small>maximum</small>	12 kg	
Material	Al 6061 T6	
Surface Treatment	Anodized	
Mounting Interface	6x M5 (H); 9x M5 (V)	



## IV. 12U MyPOD2

The 12U MyPOD2 is a versatile tool for CubeSat qualification, testing, fit-checks, storage and transportation. It supports various configurations, such as 1x12U, 2x6U, 4x3U, or mixed 1U, 2U, and 3U CubeSats.



### Suitable CubeSat Configuration

The 12U MyPOD2 can be equipped with several of our CubeSat configurations:

- 4x 3U CubeSats.
- 2x 3U + 6U CubeSats.
- 2x 6U CubeSats.
- 12U CubeSat

Vibration Table Adapter Plates is also available.

### Product Specifications

Scope	Typical Value	Remarks
<b>Environmental Characteristics</b>		
Temperature Range	-50°C to +100°C	
<b>Dimensions</b>		
External Size (L x W x H)	268 x 266 x 442.1 mm	
Rail Size (L x W x H)	227 x 227 mm	
CubeSat Size (L x W x H)	226.3 x 226.3 x 366.0 mm	
<b>Physical Characteristics</b>		
Empty Mass	15 kg	
Payload Mass <small>maximum</small>	19.2 kg	24 kg - class CubeSat in space
Material	Al 6061 T6	
Surface Treatment	Anodized	
Mounting Interface	6x M5 (H); 12x M5 (V)	